



Series PC - Feature

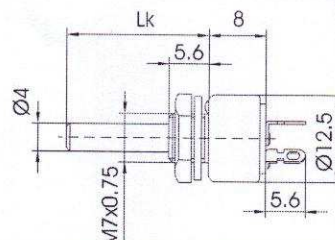
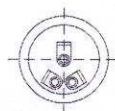
- Closed version
- Resistance tolerance:
 - $\pm 20\%$ for values R 100 Ω to 1M Ω
 - $\pm 30\%$ for values $R \geq 1\text{M}\Omega$ to 4.7M Ω
- On special request closer tolerances are available

Rotary Potentiometers / Ser. PC 4

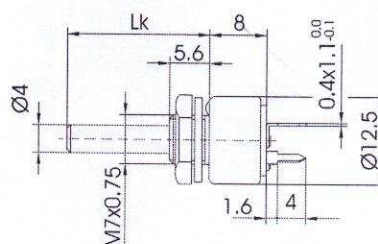
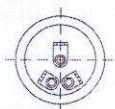
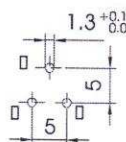
Technical data

Rated dissipation at $\vartheta_{\text{amb}} = 70^\circ\text{C}$	lin 1 W / log 0.5 W
Resistance value range	50 Ω to 4.7M Ω
Nominal voltage	lin 300V - / log 250V -
Electric angle of rotation	$220^\circ \pm 10^\circ$
Mechanical angle of rotation	$250^\circ \pm 10^\circ$
Operating torque	5 to 35 mNm
End stop torque	≥ 700 mNm
Resistance laws (DIN 41450)	lin, log ⁺ , log ⁻ , special
Residual resistance (DIN 41450)	lin $\leq 1 \times 10^{-3} R_n$ / non lin $\leq 1 \times 10^{-3} R_n$ / final $\leq 2 \times 10^{-2} R_n$
Temperature range (HSF, DIN 40040)	-55°C to 125°C
Lock nut torque	max 0.4 Nm

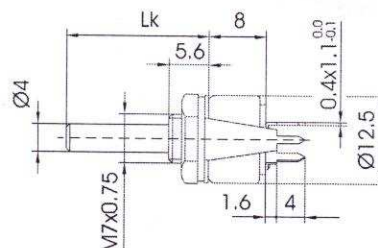
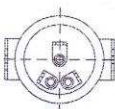
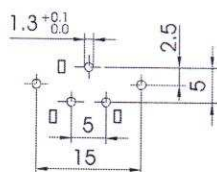
PC4P



PC5P



PC5PNA

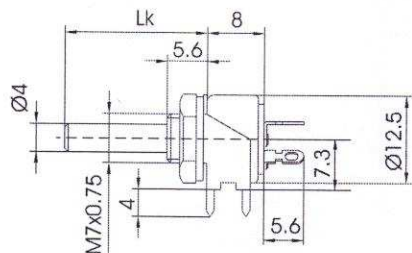
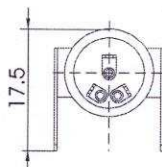
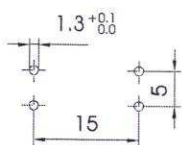




Iskra Iskra EMS d.o.o.

Rotary Pots / Ser. PC

PC4NB



Ordering Example / Ser. PC 4

PC4
POT SERIE
PC4
PC5

NA
VERSION OF BASE
NA = VERTICAL
NB = HORIZONTAL

4L20F
VERSION
4 = Ø 4mm
L = SHAFT
20 = LENGTH IN mm
F = FLATED

100K

2
LAW OF VARIATION
LIN
2 = LOGARIT.
3 = ANTILOG.
4 = SPECIAL

AVAILABLE LENGTHS Lk = 12, 20, 32, 40, 42 mm